

CCT & 5 in 1 Dimmable Constant Voltage

CCT & 5 in 1 (Triac, 0-10V, 1-10V, Resistor, 10V PWM) Dimmable LED Driver

可控硅&0-10V (5合1)双色调光电源

Features

特性

- **Dim-all:** Triac/0-10V/1-10V/10V PWM/Potentiometer
- ★ **Working Mode:** Switch to PWM or Voltage Reduce output
- **Universal input:** 100-277Vac
- **Dimming effect:**
 - Voltage Reduce mode:** 100%-0.01% dim, stepless dimming, flicker-free,
 - PWM dim mode:** 100-0.1% dim, flicker-free
- **Triac dim mode:** Forward phase & reverse phase, MLV, ELV dim
- Wet, damp, and dry location,
- Title 24 JA8 compliant
- Build in active PFC, typical power factor > 0.95, THD < 10% @ 120V Max. load
- Constant voltage type, fine tune of output voltage
- Super low loading request, works perfect at 10-100% load.
- Short-circuit, over-temperature, over-load protection.
- 7 years warranty
- UL cUL listed, Class 2, Class P, Type HL, FCC, NEMA 4X, CE, RoHs

调光方式: 可控硅/0-10V/1-10V/10V PWM/电阻调光

★ **工作模式:** PWM输出与降压输出可切换

通用输入: 100-277Vac

调光效果:

降压模式: 100%-0.01%调光, 无级调光, 无闪烁

PWM 调光模式: 100-0.1% 调光, 无闪烁

可控硅调光模式: 正相和反相、MLV、ELV 调光

适用于潮湿、潮湿和干燥的位置

Title 24 JA8 兼容

内置有源PFC, 典型功率因数 > 0.95, THD < 10% @ 120V Max. load

恒压型, 输出电压微调

超低负载要求, 在 10-100% 负载下完美运行

短路、过温、过载保护

7年保修

认证: UL/cUL, Class 2, Class P, Type HL, FCC, NEMA 4X, CE, ROHS

Selling Points

卖点

- **1) Voltage Reduce Output**
- √Dimming range: 100%-0.01% Ultra Deep Amplitude
- √The output voltage peak is in the affordable value of the LED during driver on/off and dimming, no harm to the LED for long-term using, and slow down the speed of lumen depreciation.
- √Works with single channel and two channel CCT warm-dim LED strip/tape (2/3 wires).
- **2) Compatible PWM & Voltage Reduce output**
- √compatible with RGBCW different LED fixture
- √compatible with DC-DC design LED fixture, such as MR16, PAR, wall washer, linear lighting, LED strip/type

1) 降压输出

√调光范围: 100%-0.01% 超深幅度。

√驱动开/关及调光时输出电压峰值在LED可承受值, 对LED长期使用无伤害, 减缓流明衰减速度。

√适用于单通道和两通道 CCT 暖调光 LED 灯条/灯带 (2/3 线)。

2) 兼容PWM和降压输出

√兼容RGBCW不同的LED灯具

√兼容DC-DC设计的LED灯具, 如MR16、PAR、洗墙灯、线性照明、LED灯条/类型

Application

应用

- LED strip/LED tape/LED module
- Residential Lighting
- Commercial Lighting
- Indoor & outdoor LED illuminating lights.
- LED Neon
- LED City Decoration

LED灯条/LED灯带/LED模组

住宅照明

商业照明

户内外LED照明灯光

LED霓虹灯

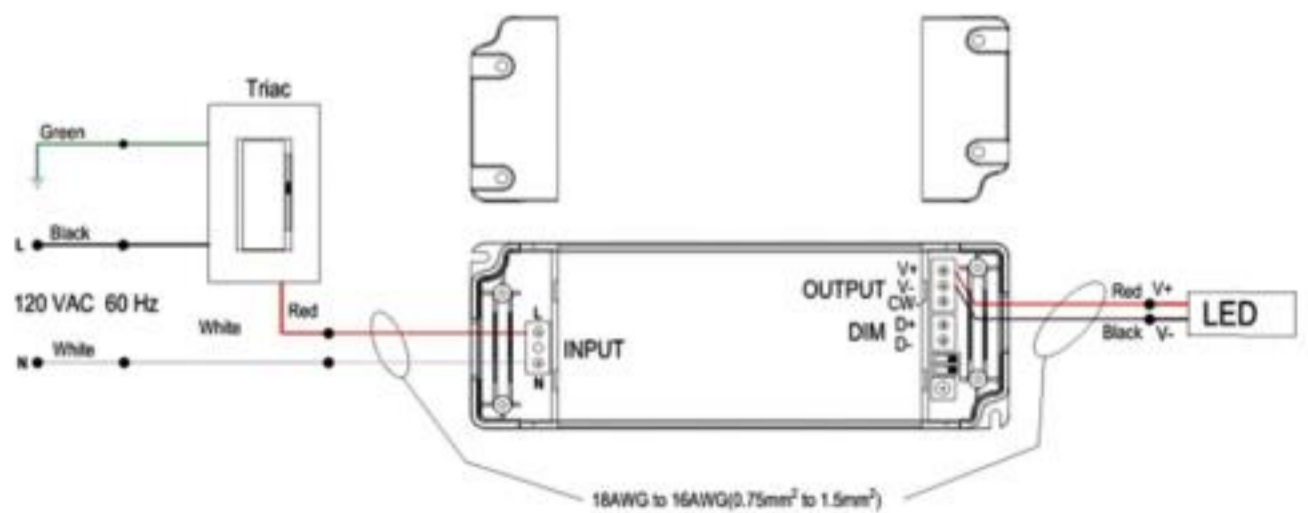
LED城市装饰灯



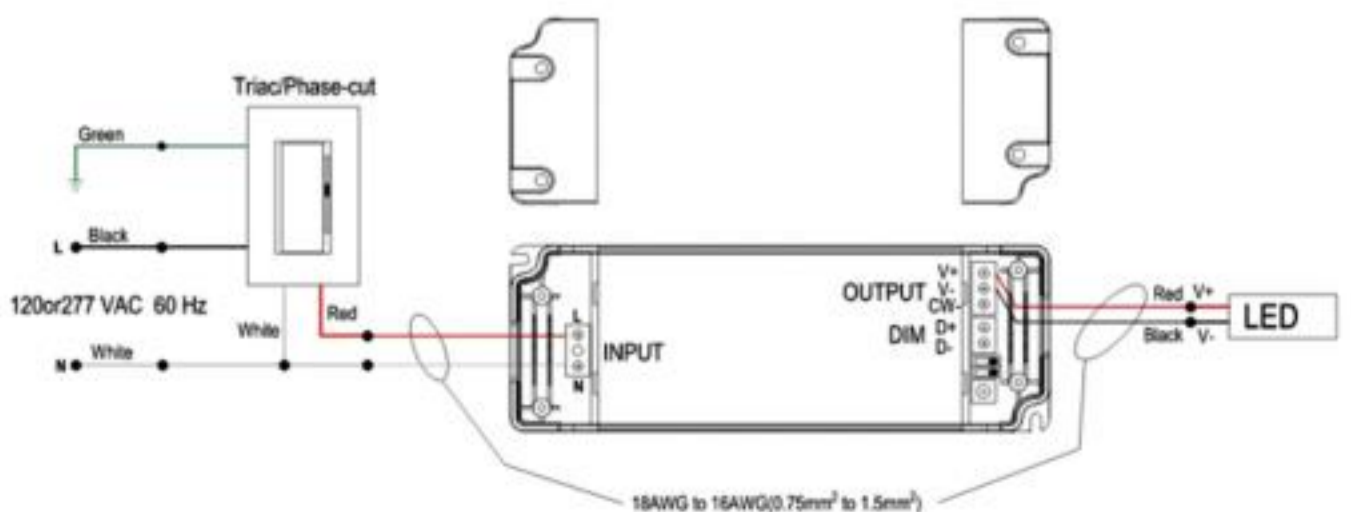
Model 型号	Cover Mteril 外壳材质	Output Voltage 输出电压 (Vdc)	Output Current 输出电流 (Amp)	Output power 输出功率 (Watt)	Product Size 尺寸 (mm)	N/W 净重 (g)
SMT-CV12060-VTD-S	Plastic(IP20)	12V (9-13V adjustable)	5A	60W	212*56*24	390
SMT-CV24060-VTD-S		24V (17-25V adjustable)	2.5A			
SMT-CV36060-VTD-S		36V (27-37V adjustable)	1.66A			
SMT-CV48060-VTD-S		48V (36-49V adjustable)	1.25A			
SMT-CV24096-VTD-S	Plastic(IP20)	24V (17-25V adjustable)	4A	96W	212*56*24	390
SMT-CV48096-VTD-S		48V (36-49V adjustable)	2A			
SMT-CV12100-VTD-S	Plastic(IP20)	12V (9-13V adjustable)	8.33A	100W	212*56*24	390
SMT-CV24100-VTD-S		24V (17-25V adjustable)	4.17A			
SMT-CV36100-VTD-S		36V (27-37V adjustable)	2.77A			
SMT-CV48100-VTD-S		48V (36-49V adjustable)	2.08A			

Wiring Diagram 接线图

- 1) Triac dimming -Triac/MLV load type
Notice: Not request neutral wire of dimmer.
1) 可控硅调光-可控硅/MLV负载型
注意：不要求调光器的零线。



- 2) Triac dimming- ELV load type
Notice: Normally request neutral wire of dimmer.
2) 可控硅调光-ELV负载型
注意：通常要求调光器的零线。

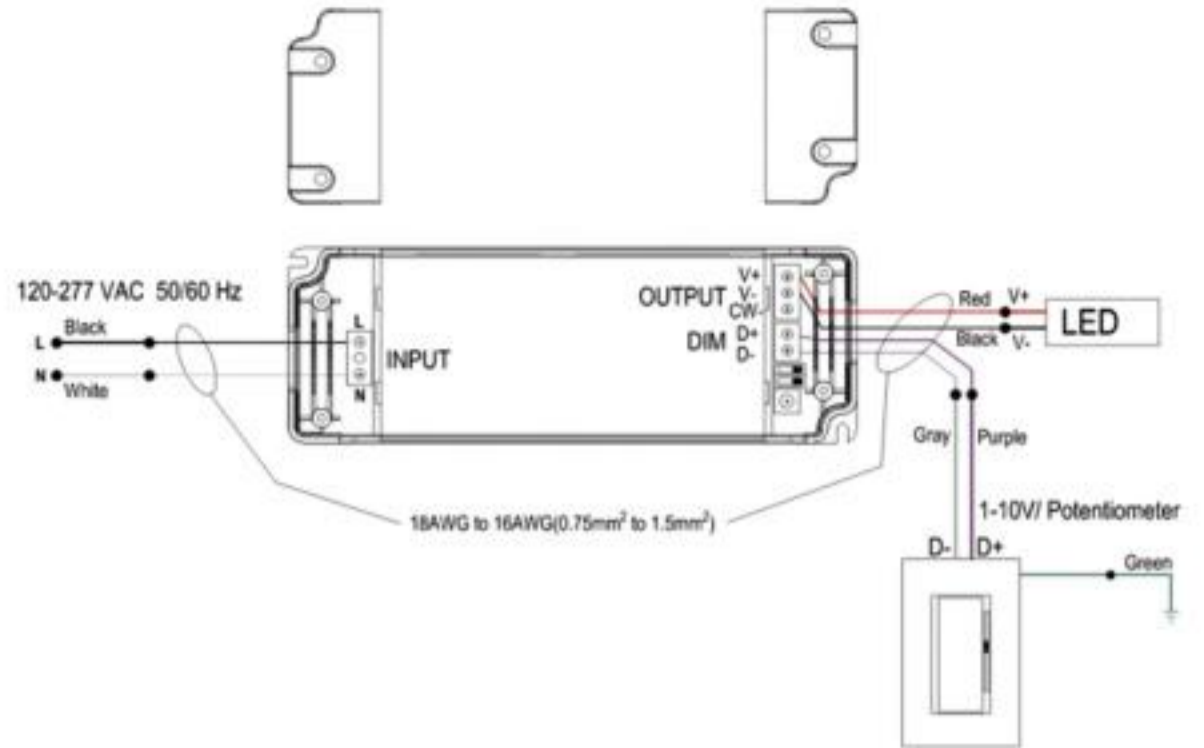


3) 0-10V dimming-only dimming

Notice: The dimmer can't cut off the power in this connecting way.

3) 0-10V 调光

注意：调光器不能以这种连接方式切断电源。

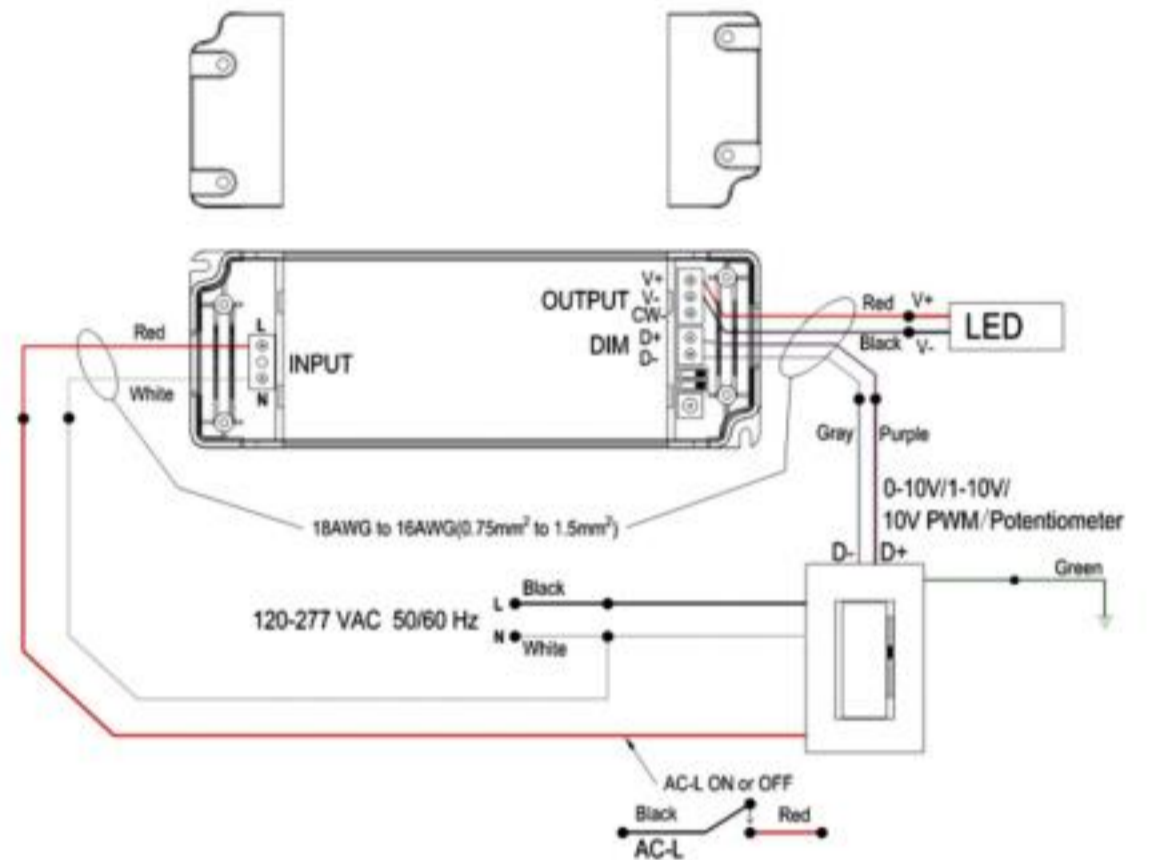


4) 0-10V dimming-only dimming

Notice: The dimmer can cut off the power in this connecting way.

3) 0-10V 调光

注意：调光器不能以这种连接方式切断电源。



5) Works with Two channel CCT warm-dim LED strip/tape (3 wires)

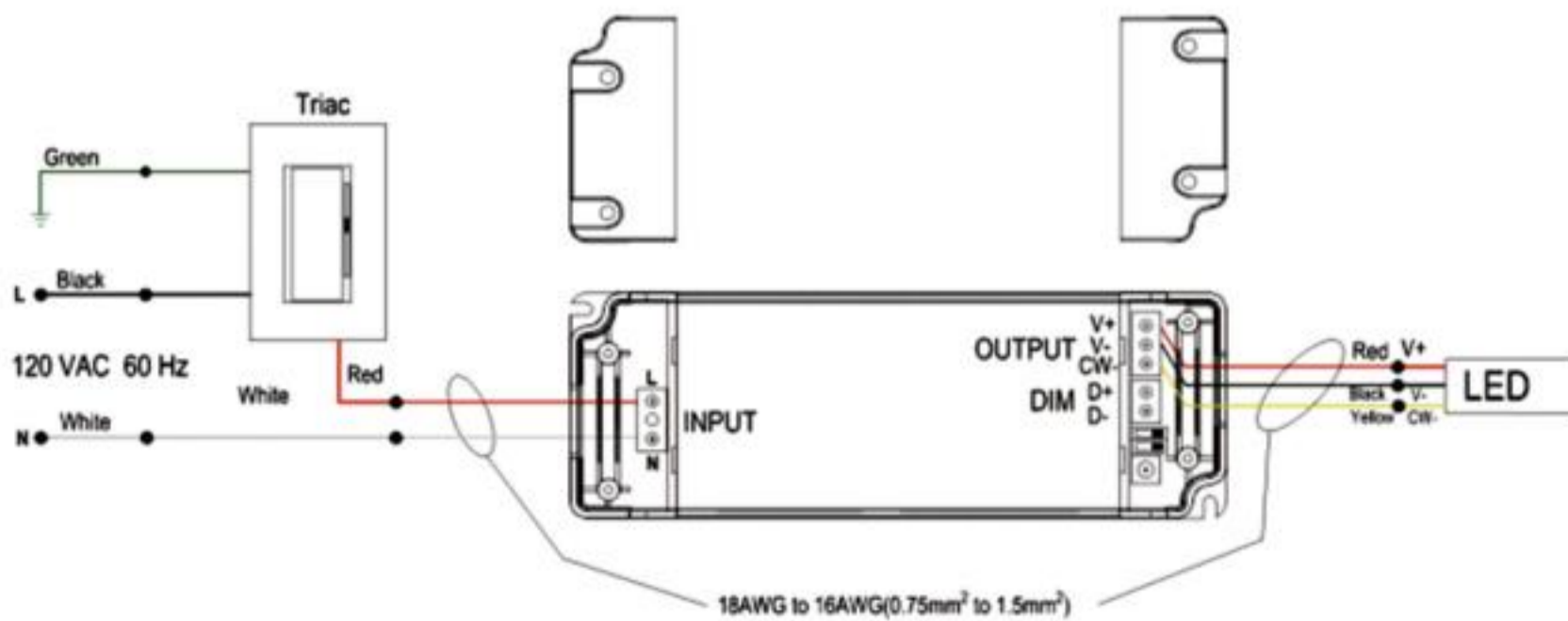
Triac dimming -Triac/MLV load type

Notice: Not request neutral wire of dimmer.

5) 与两通道 CCT 暖调光 LED 灯条/灯带 (3 线) 一起使用

可控硅调光-可控硅/MLV负载类型

注意：不要求调光器的零线。

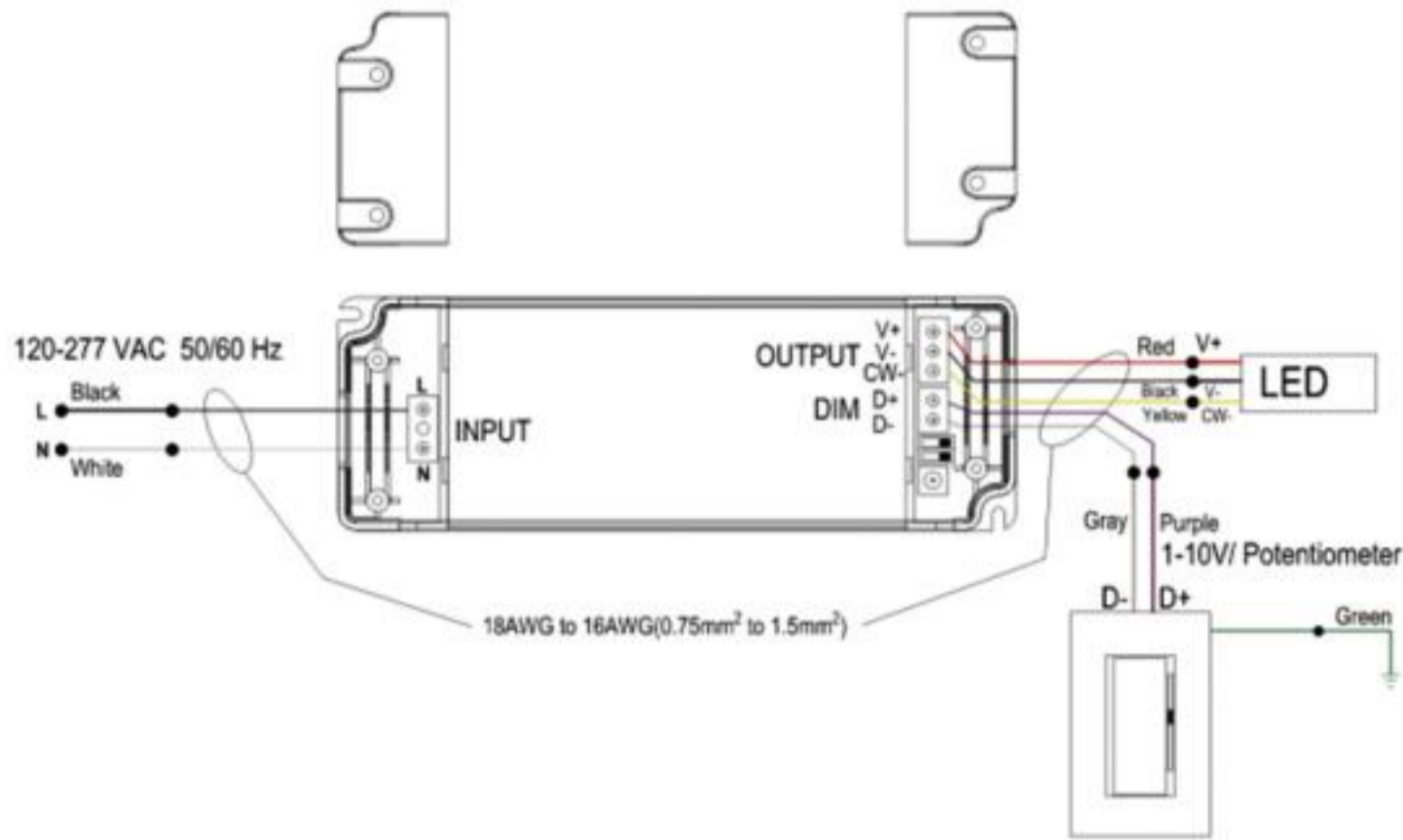


6) 0-10V dimming-only dimming

Notice: The dimmer can't cut off the power in this connecting way.

6)0-10V 调光

注意：调光器不能以这种连接方式切断电源。

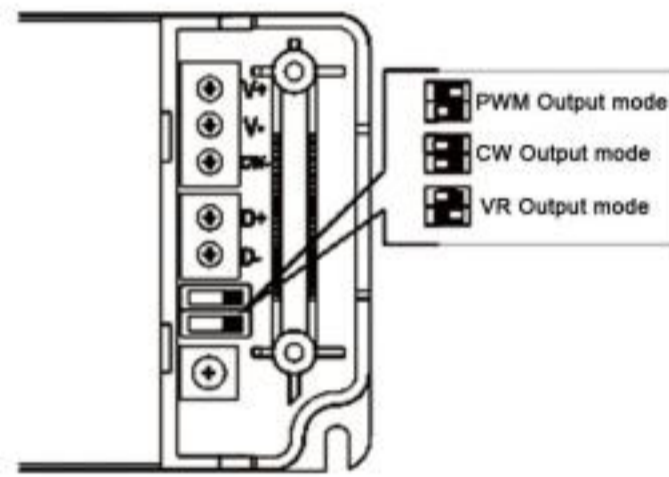
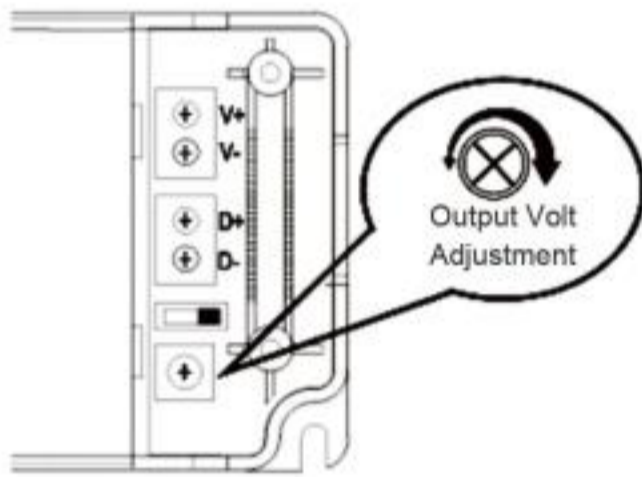


Fine tune output voltage

微调输出电压

Switch to PWM Output or Voltage Reduce Dimming Mode

切换到PWM输出或降压调光模式



NOTES:

Remove the output cover and screw it to fine tune the output voltage.

See below fine tune range

12V output: 9V-13V

24V output: 17V-25V

注：

取下输出盖并拧紧以微调电压。

见下文微调范围

12V输出：9V-13V

24V输出：17V-25V

Product Display

产品展示



CCT & 5 in 1 Dimmable Constant Voltage

CCT & 5 in 1 (Triac, 0-10V, 1-10V, Resistor, 10V PWM) Dimmable J-Box LED Driver

可控硅&0-10V (5合1)调光双色壳机一体电源

Features

特性

- **Dim-all:** Triac/0-10V/1-10V/10V PWM/Potentiometer
- ★ **Working Mode:** Switch to PWM or Voltage Reduce output
- **Universal input:** 100-277Vac
- **Dimming effect:**
 - Voltage Reduce mode:** 100%-0.01% dim, stepless dimming, flicker-free,
 - PWM dim mode:** 100-0.1% dim, flicker-free
- **Triac dim mode:** Forward phase & reverse phase, MLV, ELV dim
- Wet, damp, and dry location,
- Title 24 JA8 compliant
- Build in active PFC, typical power factor > 0.95, THD < 10% @ 120V Max. load
- Constant voltage type, fine tune of output voltage
- Super low loading request, works perfect at 10-100% load.
- Short-circuit, over-temperature, over-load protection.
- Exclusive patent design of "Clamshell" junction box
- Flexible wiring compartment to adjust the AC and DC wiring space
- UL cUL listed, Class 2, Class P, Type HL, FCC, NEMA 4X, CE, RoHs

调光方式: 可控硅/0-10V/1-10V/10V PWM/电阻调光

★ **工作模式:** PWM输出与降压输出可切换

通用输入: 100-277Vac

调光效果:

降压模式: 100%-0.01%调光, 无级调光, 无闪烁

PWM 调光模式: 100-0.1% 调光, 无闪烁

可控硅调光模式: 正相和反相、MLV、ELV 调光

适用于潮湿、潮湿和干燥的位置

Title 24 JA8 兼容

内置有源PFC, 典型功率因数 > 0.95, THD < 10% @ 120V Max. load

恒压型, 输出电压微调

超低负载要求, 在 10-100% 负载下完美运行

短路、过温、过载保护

"翻盖" 接线盒专利设计

灵活的接线隔间, 可调节交直流接线空间

认证: UL/cUL, Class 2, Class P, Type HL, FCC, NEMA 4X, CE, ROHS

Selling Points

卖点

- **1) Voltage Reduce Output**
 - √ Dimming range: 100%-0.01% Ultra Deep Amplitude
 - √ The output voltage peak is in the affordable value of the LED during driver on/off and dimming, no harm to the LED for long-term using, and slow down the speed of lumen depreciation.
- √ Works with single channel CCT warm-dim LED strip/tape (2 wires).
- **2) Compatible PWM & Voltage Reduce output**
 - √ synchronously dimming the LEDs with different starting voltages.
 - √ compatible with DC-DC design LED fixture, such as MR16, PAR, wall washer, linear lighting, LED strip/tape

1) 降压输出

√ 调光范围: 100%-0.01% 超深调光, 长期使用, 减缓流明衰减速度。

√ 适用于单通道 CCT 暖调光 LED 灯条/灯带 (2 线)。

√ 驱动器开/关和调光时输出电压峰值在LED可承受值内, 对LED无伤害

2) 兼容PWM和降压输出

√ 兼容RGBCW不同的LED灯具

√ 兼容DC-DC设计的LED灯具, 如MR16、PAR、洗墙灯、线性照明、LED灯条/类型

Application

应用

- LED strip/LED tape/LED module
- Residential Lighting
- Indoor & outdoor LED illuminating lights.
- LED Neon
- LED City Decoration

LED灯条/LED灯带/LED模组

住宅照明

户内外LED照明灯光

LED霓虹灯

LED城市装饰灯



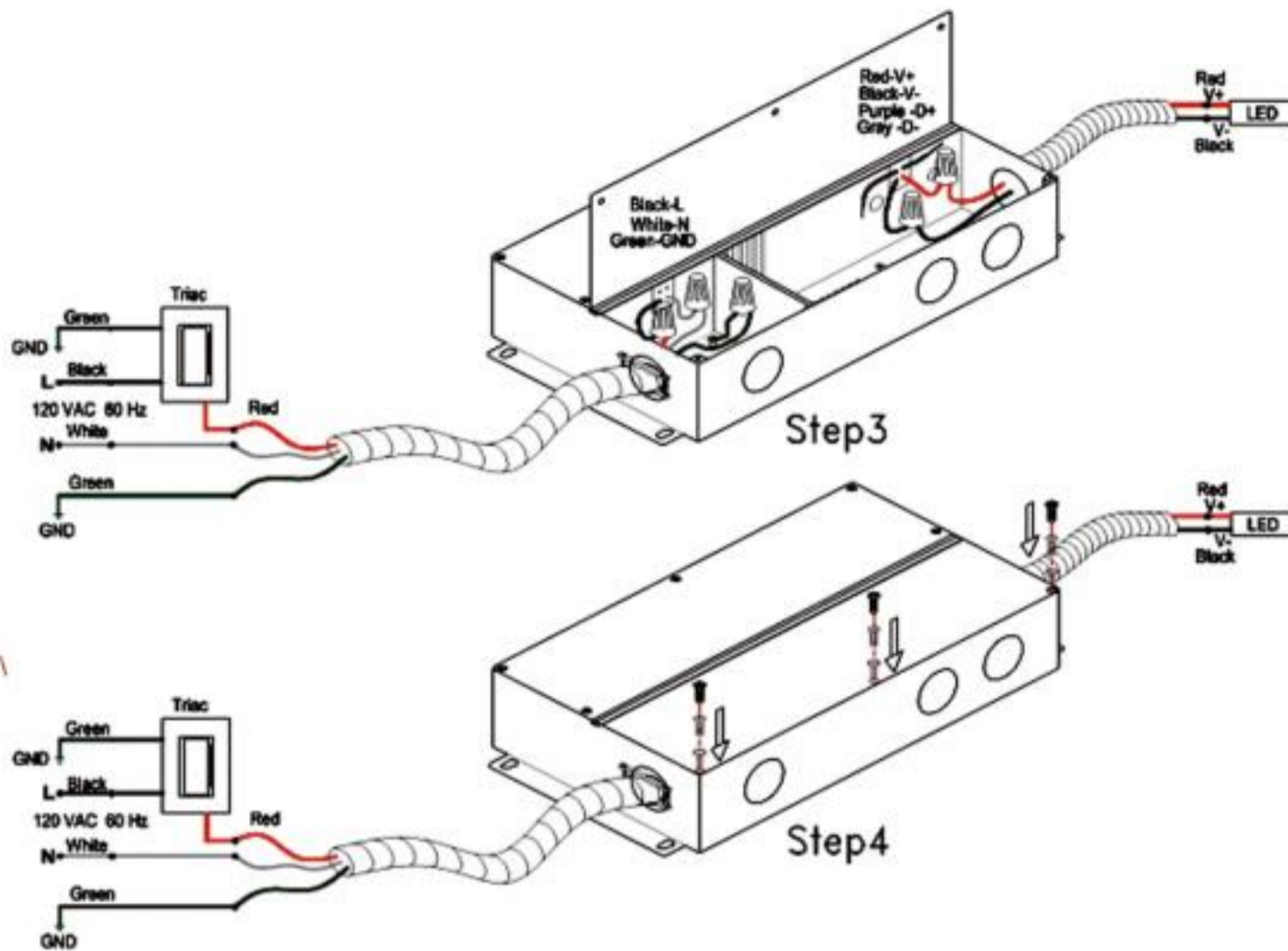
Model 型号	Cover Mteril 外壳材质	Output Voltge 输出电压 (Vdc)	Output Current 输出电流 (Amp)	Output Power 输出功率 (Watt)	Product Size 尺寸 (mm)	N/W 净重 (g)
SMT-CV12060-VTDHV3	NEMA 4X	12 (9-13V adjustable)	5A	60W	226.5*117.5*42.5	1000
SMT-CV24060-VTDHV3		24 (17-25V adjustable)	2.5A			
SMT-CV36060-VTDHV3		36 (27-37V adjustable)	1.66A			
SMT-CV48060-VTDHV3		48 (36-49V adjustable)	1.25A			
SMT-CV24096-VTDHV3		24 (17-25V adjustable)	4A	96W	226.5*117.5*42.5	1000
SMT-CV48096-VTDHV3		48 (36-49V adjustable)	2A			
SMT-CV12100-VTDHV3		12 (9-13V adjustable)	8.33A	100W	226.5*117.5*42.5	1000
SMT-CV24100-VTDHV3		24 (17-25V adjustable)	4.17A			
SMT-CV36100-VTDHV3		36 (27-37V adjustable)	2.77A			
SMT-CV48100-VTDHV3		48 (36-49V adjustable)	2.08A			
SMT-CV12150-VTDHV3		12 (9-13V adjustable)	12.5A	150W	254*132*42.5	1000
SMT-CV24150-VTDHV3		24 (17-25V adjustable)	6.25A			
SMT-CV36150-VTDHV3		36 (27-37V adjustable)	4.16A			
SMT-CV48150-VTDHV3		48 (36-49V adjustable)	3.15A			
SMT-CV12200-VTDHV3		12 (9-13V adjustable)	16.67A	200W	254*132*42.5	1860
SMT-CV24200-VTDHV3		24 (17-25V adjustable)	8.33A			
SMT-CV36200-VTDHV3		36 (27-37V adjustable)	5.55A			
SMT-CV48200-VTDHV3		48 (36-49V adjustable)	4.16A			
SMT-CV12300-VTDHV3		12 (9-13V adjustable)	25A	300W	289*132*42.5	2150
SMT-CV24300-VTDHV3		24 (17-25V adjustable)	12.5A			
SMT-CV36300-VTDHV3	36 (27-37V adjustable)	8.33A				
SMT-CV48300-VTDHV3	48 (36-49V adjustable)	6.25A				
High Power Class2 120W-340W						
SMT-CV24192-VTDHV3 (Multi output 2x96W)	NEMA 4X	24 (17-25V adjustable)	Multi current 2x4A	192W (Class 2)	254*132*42.5	1860
SMT-CV48192-VTDHV3 (Multi output 2x96W)		48 (36-49V adjustable)	Multi current 2x2A			
SMT-CV24340-VTDHV3 (Multi output 4x85W)		24 (17-25V adjustable)	Multi current 4x3.54A	340W (Class 2)	289*132*42.5	2150
SMT-CV48340-VTDHV3 (Multi output 4x85W)		48 (36-49V adjustable)	Multi current 4x1.77A			

Wiring Diagram

接线图

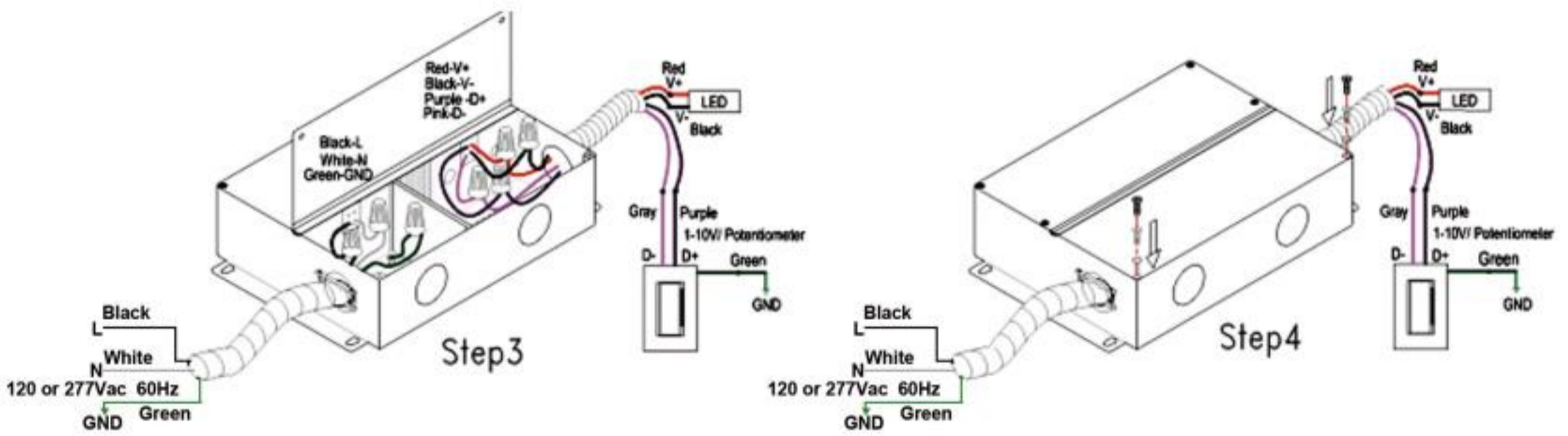
1) Triac dimming -Triac/MLV load type
Note: Not request neutral wire of dimmer.

1) 可控硅调光-可控硅/MLV负载类型
注意：不要求调光器的零线。



2) 0-10V dimming-only dimming
Note: The dimmer can't cut off the power in this connecting way.

3) 0-10V 调光
注意：此连接方式调光器不能断电。

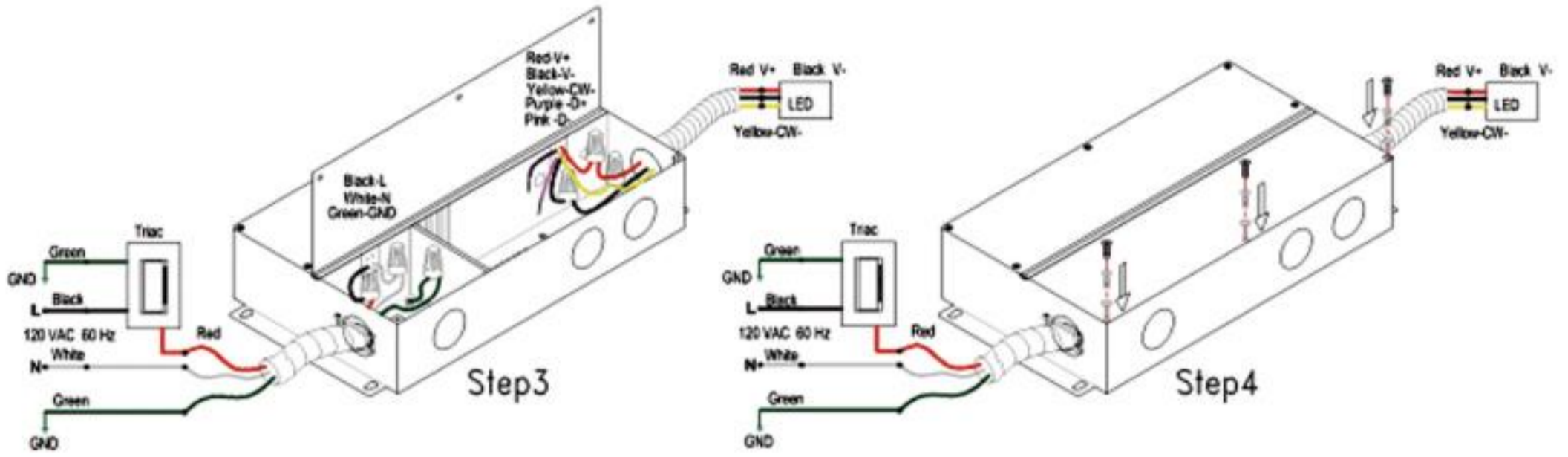


Works with Two channel CCT warm-dim LED strip/tape (3 wires)

适用于两通道 CCT 暖调光 LED 灯条/灯带 (3 线)

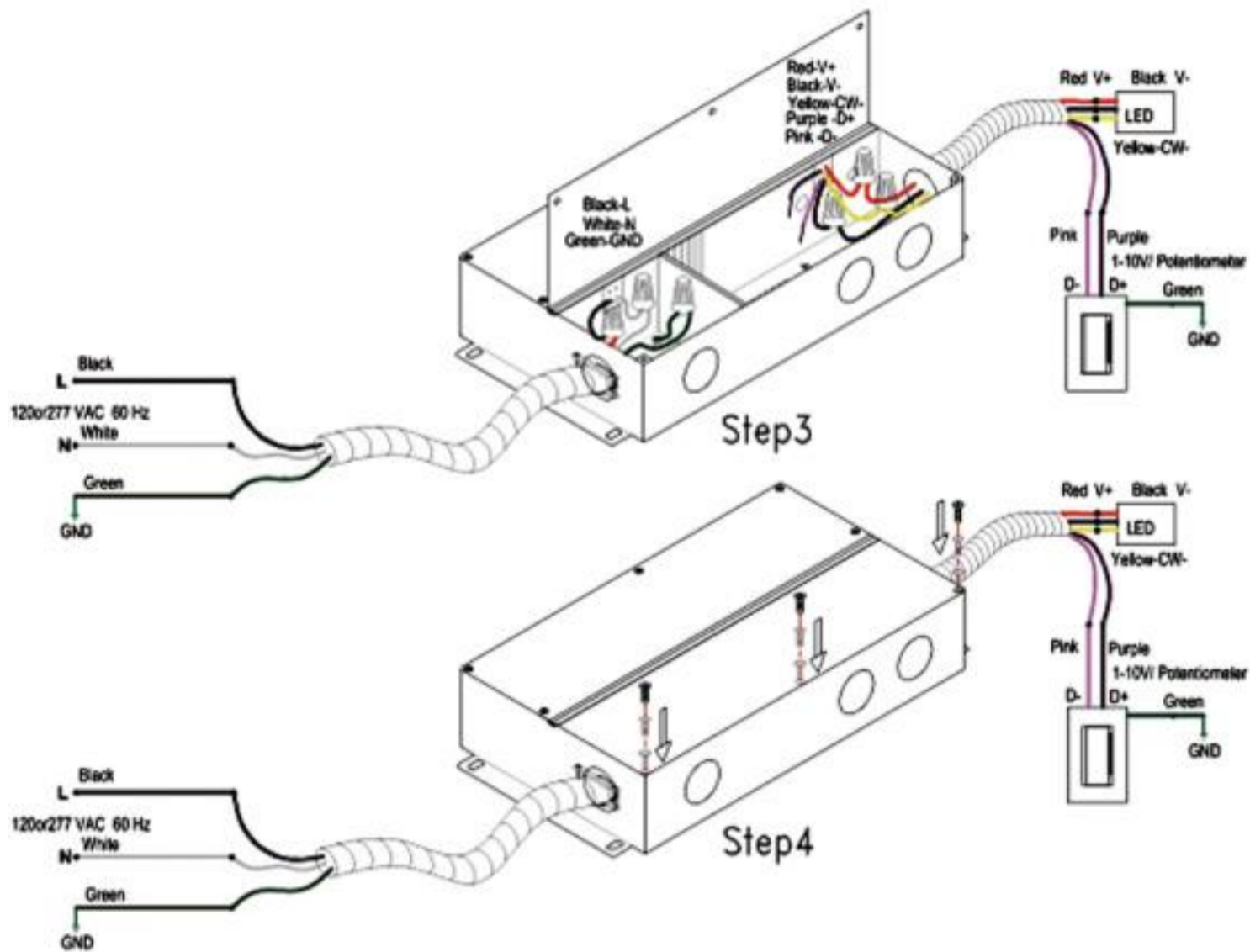
1) Triac dimming - Triac/MLV load type
(Notice: Not request neutral wire of dimmer.)

1) 可控硅调光-可控硅/MLV负载类型
(注意: 不要求调光器的零线。)



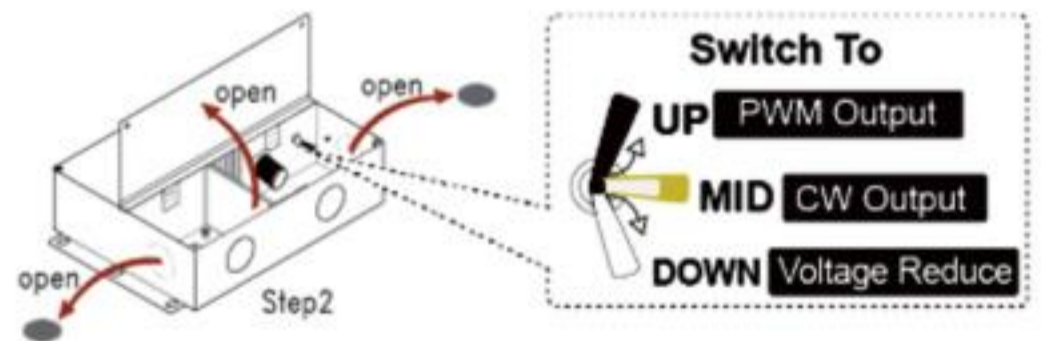
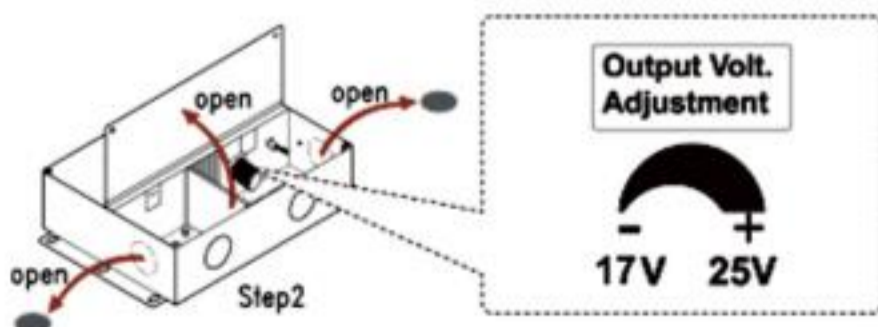
3) 0-10V dimming-only dimming
Note: The dimmer can't cut off the power in this connecting way.

4) 0-10V 调光
注意: 此连接方式调光器不能断电。



Fine Tune Voltage
微调电压

Switch to Different Output Mode
切换到不同的输出模式



See below fine tune range:
12V output: 9V-13V
24V output: 17V-25V

见以下微调范围:
12V输出: 9V-13V
24V输出: 17V-25V

Push up: PWM output mode
Push middle: CW output mode
Push down: Voltage reduce mode

上推: PWM输出方式
推中: CW输出模式
下推: 降压模式